

TOKYO Solamachi Open Hours TOKYO Solamachi: 10:00 AM-9:00 PM (Irregular Closing Days\*)  
 (Restaurant floors on the 6th, 7th, 30th and 31st floors are open from 11:00 AM to 11:00 PM)  
 \* Open hours may vary depending on the store or restaurant.

Please scan the QR code with your mobile phone or smartphone to check the operating hours, fees, and other details for each facility on their respective websites.

TOKYO SKYTREE®		SUMIDA AQUARIUM	
KONICA MINOLTA PLANETARIUM TENKU		Postal Museum Japan	

English

# TOKYO Solamachi Floor Guide

## TOKYO SKYTREE TOWN SPECIAL BENEFITS WITH SELECT TICKETS

Be sure to present your ticket before you order or purchase!

\*Tickets will not be applied if presented during payment

Present the tickets below to receive special offers at Tokyo Solamachi shops!

--	--	--	--

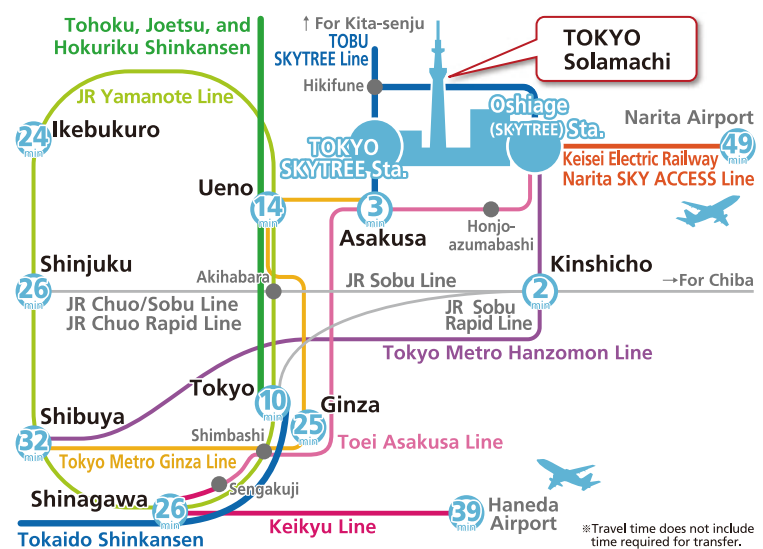
## TOKYO Solamachi Website Floor Guide (English, 中文, 한국어)

\* Please note that information may be changed or updated. For the latest information, please check our website.



Ver. 2024.11

## LARGE-AREA MAP



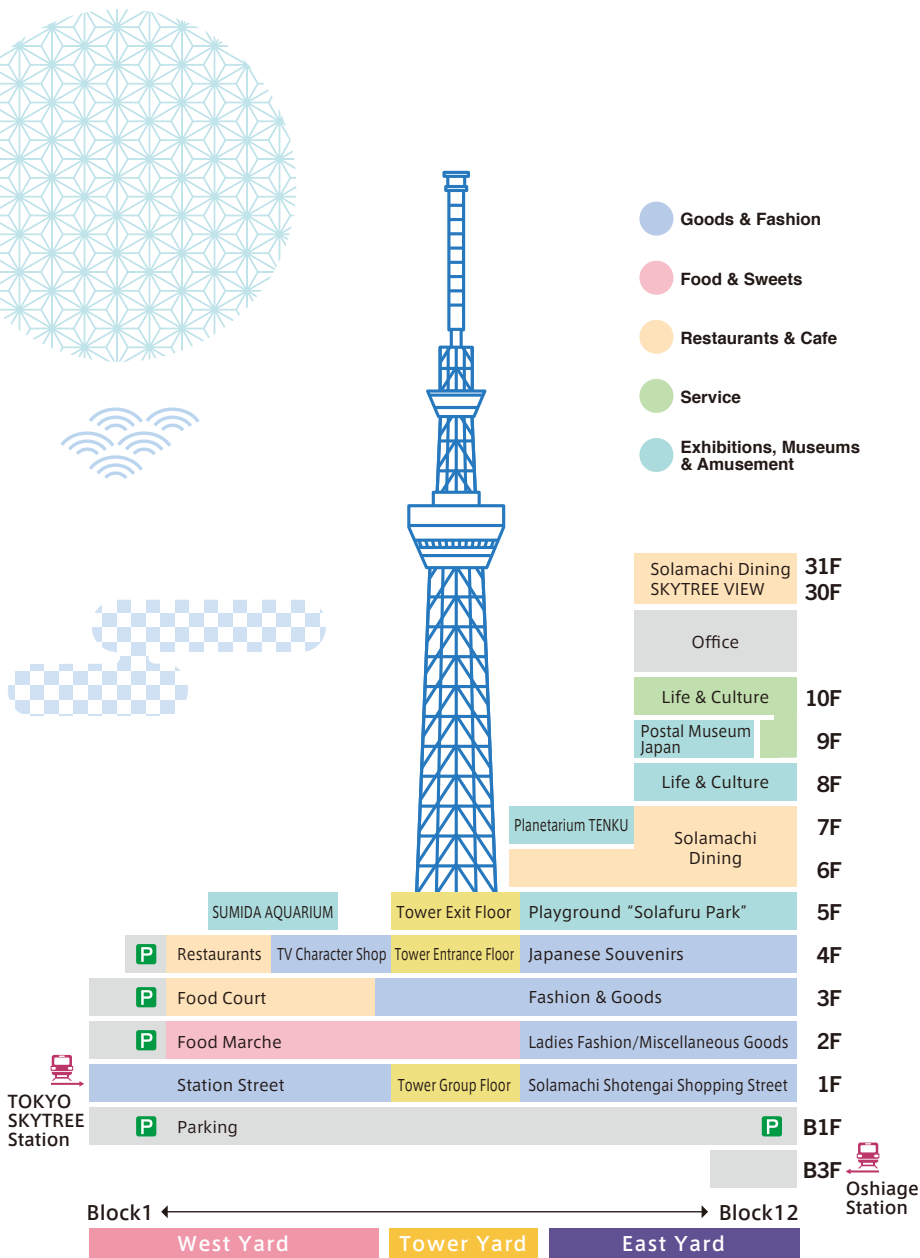
--	--	--	--	--	--

SSID:TOBU\_Free\_Wi-Fi

## SERVICES

Information (Tourist Information) (Wheelchair Rentals)	1F Block 12 3F Block 5
Share Cycle	1F Block 5
Strollers with Coin-operated Locking Mechanism	1F Block 3/Block 12 2F Block 2/Block 3 3F Block 5
Nursing Room	1F Block 7 3F Block 3 4F Block 7 6F Block 9
Multi-Purpose Restroom	Each floor (except for B3F and 10F)
Smoking Area	2F Block 10 3F Block 3/Block 10 4F Block 5(outdoor)/Block 9(outdoor) 7F Block 12 9F Block 11 30F Block 12 31F Block 12
Vending Machines	1F Block 5/Block 8 (outdoor)/Block 9 (outdoor)/Block 10 (outdoor) 2F Block 3/Block 4 (outdoor)/Block 10 3F Block 10 4F Block 5 (outdoor)/Block 7 (outdoor)/Block 9 (outdoor)/Block 10 5F Block 2 (outdoor)/Block 10 8F Block 9 9F Block 12 10F Block 12 Elevator halls for multi-level parking and underground parking (except for P6F)
Baggage Room (with fees)	1F Block 7
Coin Lockers	B3F Block 12 1F Block 3 (indoor/outdoor)/Block 4 (outdoor)/Block 8/Block 9(outdoor)/Block 12 2F Block 6 3F Block 7 4F Block 3 (indoor/outdoor)/Block 5 (outdoor)/Block 9 (outdoor)
Refrigerated Lockers	2F Block 3
Change Dispensers	4F Block 5 (next to outdoor coin lockers)
ID Photo Booth	1F Block 3/Block 12
Pay Phones	1F Block 3/Block 12 4F Block 5
Baggage Delivery Service	1F Block 7
Lost & Found Center	1F Block 12 03-5809-7806 (9:00-23:00)
Postbox	9F Block 11 (available during Postal Museum Japan operating hours)
Foreign Currency Exchange Machine	1F Block 12 4F Block 10 5F Block 5
Prayer Room	5F Block 7

- Information for Patrons with Pets**
  - Patrons visiting the complex (including outdoor areas) with pets are kindly requested to use a pet cart or carrier bag at all times.
  - Please note that we will not be responsible for any product loss or damage, accidents or incidents with other patrons which arise as a result of your pet.
  - Guide dogs, hearing dogs, and service dogs are permitted in all stores/restaurants within the building and facility.
  - There is a shop and cafe in Block 6 on the 1st floor which patrons can visit together with their pets.
- Disabled Patrons**
  - Multi-Purpose Restrooms: Multi-purpose restrooms are available on every floor except B3F and the 10th floor. All multi-purpose restrooms have ostomate features.
- Coin locker**
  - If you scan the QR code on the right-hand side with your smartphone etc., you can check the availability of the coin lockers in TOKYO SKYTREE TOWN®.



## TOKYO Solamachi

1-1-2 Oshiage, Sumida-ku, Tokyo 131-0045 Japan  
<https://www.tokyo-solamachi.jp/en/>



# 1F

Solamachi Shotengai Shopping Street  
Station Street  
Cafe & Miscellaneous Goods  
Solamachi Square



## West Yard

- JIDAIYA (Workshop)
- QB HOUSE (Barber)
- Family Mart (Convenience store)
- au shop (Mobile phones / Mobile phone goods)
- Matsumoto Kiyoshi (Shingutsu)
- NATURAL KITCHEN & (Household goods)
- STARBUCKS® (Cafe)
- Resona Bank ATM (Banks & ATMs)
- TOKYO HIGASHI SHINKIN BANK ATM (Banks & ATMs)

## St. Street Station Street

- HOKEN NO MADOGUCHI (Insurance agency)
- WORKMAN GIRL (Ladies' / Men's / Kids' / Baby / Outdoor)
- EXCELSIOR CAFE (Cafe)

## Tower Yard

- softbank shop (Mobile phones / Mobile phone goods)
- BOX cafe and space (Character cafe and theme cafe)
- SAGAWA EXPRESS Baggage Delivery & Storage Service (Luggage storage)
- SKYTREE SHOP (Open irregularly) (Souvenirs & Gifts)

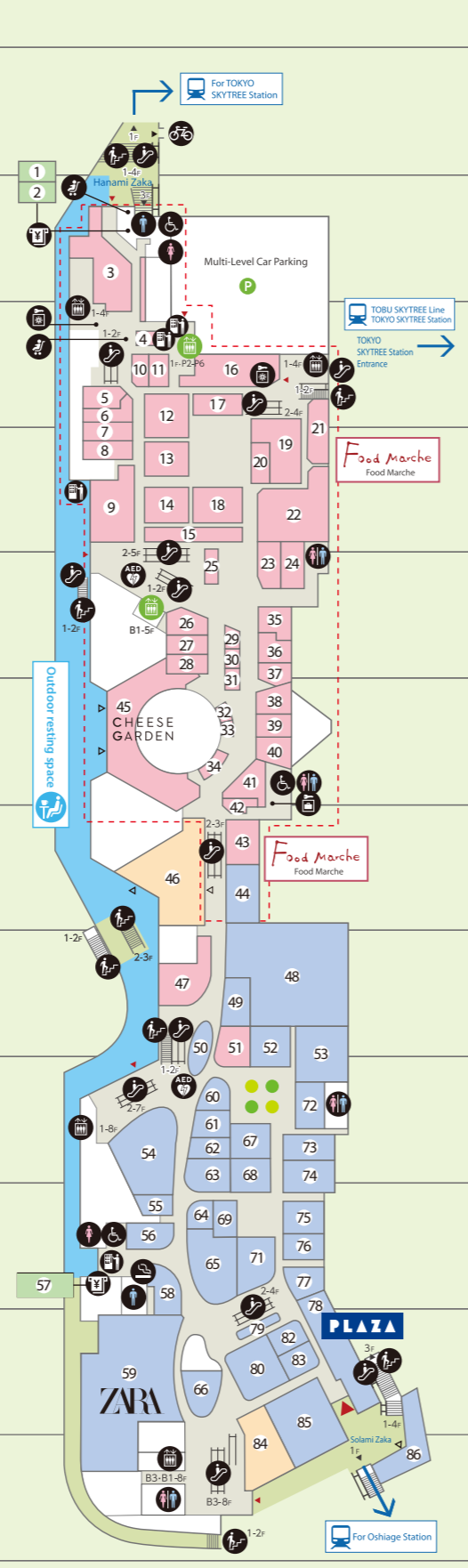
## East Yard

### Solamachi Shotengai Shopping Street

- Baskin-Robbins 31 Ice cream (Fast food / Ice cream)
- THE ALLEY (Cafe)
- Curious George Kitchen (Character cafe and theme cafe)
- BAKERY&PUBLIC PENNYLANE (Bakery / Cafe / Western cuisine / Pub)
- ECHIZEN KAISEN CLUB (Seafood Crackers)
- watashi no heya (Household goods / Gifts)
- SORA TORA YA (Chinese cuisine)
- nidaimo noguchisengyoten (Seafood bowl)
- Party Rico (Miscellaneous catering goods / Characters)
- Takoya Dotonbori Kukuru (Takoyaki / Octopus dumplings)
- MARION CREPES (Crepes)
- sola no komachi (Souvenirs / Sweets)
- kissora (Leather goods / Bags / Wallets)
- tamayura by ANAHITA STONES (Natural stones / Accessories / Jewelry)
- ANPANMAN kids collection (Kids' & Babies)
- kamakura akimoto (Pickled vegetable specialty store / Souvenir shop)
- MISOJYU (Japanese cuisine)
- Horiuchi fruit farm (Fruit park)
- FLOWER DECO (Flower shop)
- CLASUWA (Ladies' & Western cuisine)
- KUJA'AINA (Fast food)
- Samantha Thavasa Petit Choice (Wallets / Leather accessories)
- gotochi pinz Plus (Pin specialty store / Souvenirs)
- AZABU SABO (Sweets)
- BEAMS JAPAN vending machine (Vending machine)
- LUPICIA (Black tea)
- THE KISS (Accessories / Jewelry)
- Ishikunishouten (Watches & Watch repair)

# 2F

Food Marche  
Ladies Fashion/  
Miscellaneous Goods



## West Yard

### Tower Yard

#### Food Marche Fresh Food Products & Delicatessen & Sweets

- Seven Bank ATM (Banks & ATMs)
- MIZUHO Bank ATM (Banks & ATMs)
- nikinokashi (Confectionery shop)
- Specialty Coffee STAND root C (Specialty coffee)
- Hello, Greek (Greek yogurt)
- PAOPAO (Side dishes and bento bowls)
- tonkatu maisen (Donuts shop)
- SENDAGI KOSHIZUKA (Side dishes and bento bowls)
- POMPADOUR (Bakery)
- toriasa (Side dishes and bento bowls)
- POP UP SHOP
- tagosaku (Side dishes and bento bowls)
- amemohana plus (Side dishes and bento bowls)
- gutansumiyaki rikyu (Side dishes and bento bowls)
- Naniwa Koichian/Omusubi Hyakusen (Donuts shop)
- yokohamachuuka kasei (Side dishes and bento bowls)
- nihonichi (Side dishes and bento bowls)
- uzukino (Side dishes and bento bowls)
- cha maruyamaen (Japanese tea)
- CAMPO SOLARE (Gelato / Side dishes / Groceries)
- CRAFT FOOD WORKS (Side dishes and bento bowls)
- Green gourmet, KOBE CROQUETTE, VEGETERIA (Side dishes and bento bowls)
- uoriki (Fresh fish)
- ookawasuisan (Fresh fish)
- AMARA Deli (Side dishes and bento bowls)
- Genrokudou Panzoh (Bakery / Sweets)
- SAWAMITSU (Fruit and vegetable market)
- Tomizawashouten (Grocery / Food specialty store)
- New Quick (Butcher shop)
- KITANO ACE (Groceries)

### 46 RIGOLETTO ROTISSERIE AND WINE (Italian cuisine)

## East Yard

### Ladies' Fashions & Miscellaneous Goods

- Qu'il fait bon (Fast / Sweets cafe)
- BOOKS SANSEIDO (Books)
- Nagawaga Masashichi Shoten (Household goods / Gifts)
- Q-pot. (Accessories / Jewelry)
- GODIVA (Chocolate / Soft serve ice cream)
- Champion (Ladies' / Men's)
- vis (Ladies' fashion)
- BEAMS (Ladies' / Men's)
- L'OCCITANE (Cosmetics & Skin care)
- OVERRIDE (Hats, caps)
- Seven Bank ATM (Banks & ATMs)
- artemis by DIANA (Ladies' shoes)
- ZARA (Ladies' / Men's)
- Cosme Kitchen (Cosmetics & Skin care)
- gelato pique (Ice cream)
- Maison de FLEUR (Bags / Purse)
- COLLAGE GALLARDAGALANTE (Ladies' fashion)
- ete (Accessories / Jewelry)
- FREAKS STORE (Ladies' / Men's)
- POP UP SHOP

# 3F

Food Court  
Solamachi Tab-Terrace  
Fashion & Goods



## West Yard

- TOBU CARD COUNTER (Card counter)
- rakuten mobile (Mobile phones / Mobile phone goods)
- Mom's Reform (Clothes repair)
- PALETTE PLAZA (Photo print / Mobile phone charging)
- Rilakkuma store (Character store)
- miffy style (Character store)
- SNOOPY TOWN SHOP (Character store)
- TOMICA PLARAIL SHOP (Toys)
- DADWAY/ergobaby (Bags & Bases)

## Solamachi Tab-Terrace

- banana biyori (Sweets cafe)
- miyatake sanuki udon (Udon noodles)
- TSUKUJI GINDACO (Takoyaki / Octopus dumplings)
- TSUKUJI KAISEN ITADORI (Seafood bowl)
- TORICHIMI (Chicken dishes)
- RAMEN EXPRESS HAKATA IPPUDO (Ramen)
- EBISU YAKINIKU CHAMPION (Yakiniku bowl)
- AZABUJUBAN SOBA MATSUGEN (Soba noodles)
- JASMINE THAI Express (Thai cuisine)
- Nannogokusyu Harajuku Menhanbou (Chinese cuisine)
- Okoppe Milk Stand (Soft serve ice cream)

## Tower Yard

- Crane game Namco Wonder Train (Crane game)
- PUNYUS (Ladies' fashion)
- go slow caravan (Ladies' / Men's)
- RAGEBLUE (Men's fashion)
- LOWRYS FARM (Ladies' / Men's)
- ABC-MART (Shoes)
- earth music & ecology TOKYO (Ladies' fashion)
- SM2 keittio (Ladies' / Kids' & Baby)
- Air Bic Camera (Home appliances & travel goods)
- Disney Store (Character store)

## East Yard

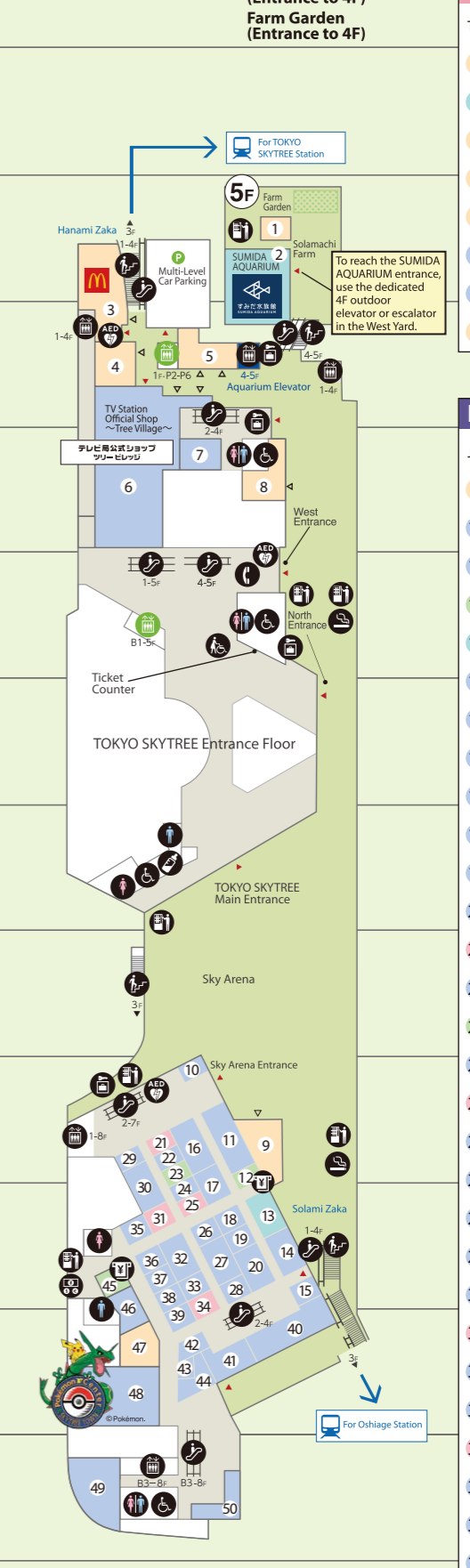
### Fashions & Goods

- UNIQLO (Ladies' / Men's / Kids' / Baby)
- coen (Ladies' / Men's)
- Fruit Gathering (Cosmetics & Skin care)
- TICTAC (Watches / Sunglasses)
- Zoff (Eyewear store)
- UNITED ARROWS green label relaxing (Ladies' / Men's / Kids' / Baby)
- Manhattan Portage (Bags)
- Onitsuka Tiger (Shoes / Men's / Ladies')
- russet (Bags / Wallets / Small leather goods)

- Calvin Klein (Ladies' / Men's)
- Oriental Traffic (Ladies' shoes)
- l'atelier du savon (Ladies' fashion)
- cotomono marche (Contact lens store)
- MARKSWEB (Cosmetics & Skin care / Household goods / Gifts)
- SORA (Ladies' / Men's / Kids' / Baby)
- Smith (Stationery / Gifts)
- Afternoon Tea LIVING (Household goods)
- MARKEY'S (Kids' & Babies)

## 4F

TV Character Shop / Restaurants & Food  
Japanese Souvenirs / Sky Arena  
TOKYO SKYTREE Entrance Floor



## 5F

SUMIDA AQUARIUM (Entrance to 4F)  
Farm Garden (Entrance to 4F)

## West Yard

- Tokyo Skytree town no niwa (Clamping / BBQ)
- SUMIDA AQUARIUM (Aquarium)
- McDonald's® (Fast food)
- HOSHINO COFFEE (Cafe / Western cuisine)
- dotonbori kamukura (Ramen)
- Tree Village (TV station goods / Souvenirs / Theme cafe)
- NHK-Character SHOP (Character store)
- COCONOHA (Cafe)

## East Yard

### Japanese Souvenirs

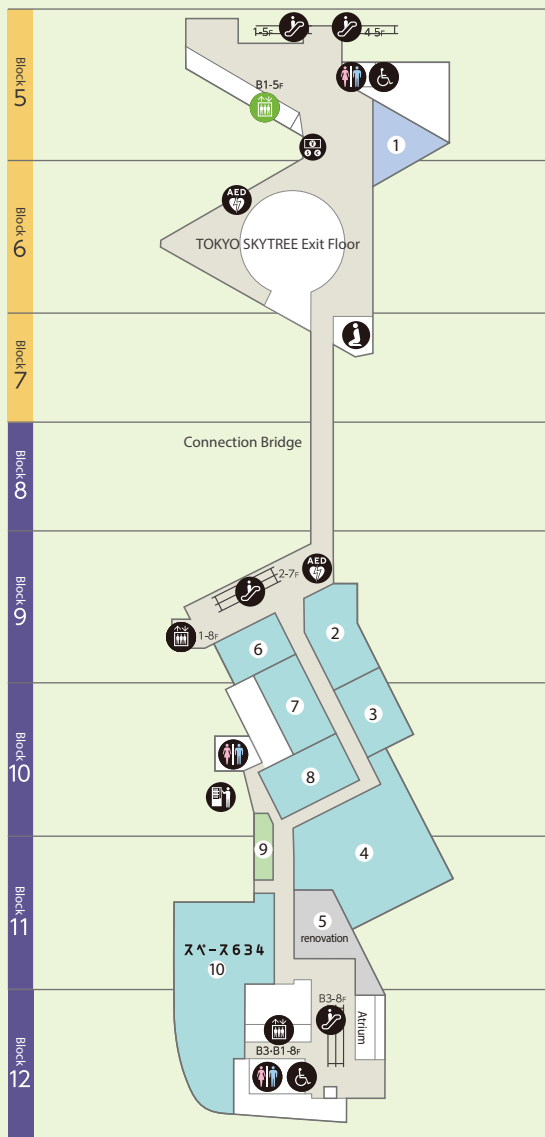
- Kirby Cafe TOKYO (Character cafe and theme cafe)
- CHUMS (Ladies' / Men's / Kids' / Baby / Outdoor)
- CHUMS (Ladies' / Men's / Kids' / Baby / Outdoor)
- MIZUHO Bank ATM (Banks & ATMs)
- GASHAPON BANDAI OFFICIAL SHOP "TOKYO Solamachi" (Gashapon)
- Neue (Stationery / Gifts)
- ARANZI ARONZO (Character store)
- Sanrio (Character store)
- MARVEL STORE by SMALL PLANET (Character store)
- nanoblock store (Toys & Models)
- kanzashiya wargo (Japanese kanzashi specialty store)
- PARIS MIKI (Other fashion)
- tomorakuno 63°C (Soft serve ice cream)
- Konnyaku Shabon (Cosmetics & Skincare / Souvenirs)
- Bakusho Nigaoe Shop (Porcelain)
- pocchiri (Japanese party specialty store / Souvenirs)
- tachigui-umeboshiya (Umeboshi specialty store / Souvenirs)
- OJICO (Kids' & Babies)
- DEMOKAU (Demonstration sales / Household goods)
- NIPPON NO AME PROJECT by nanaco plus+ (Candy specialty store / Souvenirs)
- MY ONLY FRAGRANCE (Custom made fragrances specialty shop)
- TOWER KNIVES TOKYO (Kitchen knives / Souvenirs)
- guruguru shakushaka (Fast specialty shop)
- GINZA NATSUNO (Chocolate, Japanese miscellaneous goods, souvenirs)
- varco (Leather goods / Bags / Wallets)
- STRAWBERRY MANIA (Strawberry sweets specialty store / Soft serve ice cream)
- SENGOKUDAMA (Gengoku warheads specialty store / Souvenirs)
- Ganso Shokuhin Sample-ya (Food sample specialty store / Souvenirs)
- Ultraman World M78 (Toys & Characters)
- STRICT-G (Character / Men's)
- MU-RA vert (Accessories / Fashion goods)
- JUMP SHOP (Character store)
- Tochigi Satellite Shop Tochimaru (Tochigi Prefecture Antenna Shop / Souvenirs)
- MEDICOM TOY (Hobby / Figure / Art)
- Asakusa Amezakura Ameshin (Candy specialty store / Souvenirs)
- Kirby Cafe The Store (Character store)
- Seven Bank ATM (Banks & ATMs)
- KYO-TO-TO (Kyo-to miscellaneous goods / Souvenir)
- negawakuba (Sweets cafe / Household goods)
- Pokemon Center SKYTREE TOWN (Character store)
- POP UP SHOP

**Legend**

- Information
- Escalators
- Coin Lockers
- ID Photo Booth
- TOBU POINT Checker
- Train Station
- Entrance
- Restrooms
- Postbox
- Refrigerated Lockers
- Pay Phones
- Taxi Stand (low-emission vehicles)
- Car Parking
- Multi-Purpose Restroom
- Share Cycle
- Baggage Delivery Service
- Smoking Room
- Nursing Room
- Wheelchair Rentals
- Stairs
- Vending Machines
- Elevators
- Strollers with Coin-operated Locking Mechanism
- Automated External Defibrillator
- ATM
- Foreign Currency Exchange Machine
- Bicycle Parking
- Outdoor resting space
- Bike Parking

# 5F

Playground "Solafuru Park"  
Space 634



## Tower Yard

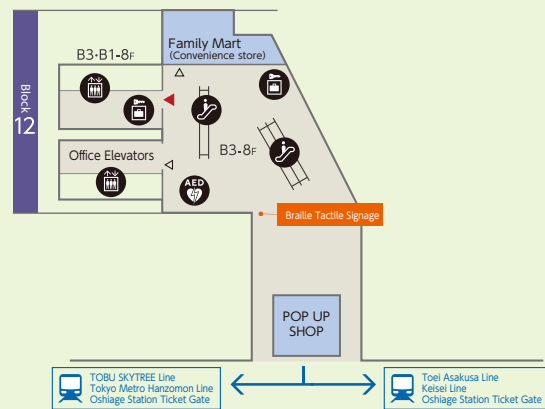
1 SKYTREE SHOP  
(Souvenirs & Gifts)

## East Yard

- |   |   |
|---|---|
| 2 Lovely Animore<br>(Animal playground)                           | 7 girls mignon<br>(Print sticker machine specialty store) |
| 3 Chikyuunoniwa baby garden<br>(Hourly children's play facility)  | 8 Chikyuunoniwa get garden<br>(Crane games)               |
| 4 Chikyuunoniwa kid's garden<br>(Hourly children's play facility) | 9 Fujiiryoki<br>(Coin-operated massage chair)             |
| 5 renovation  | 10 Space 634<br>(Exhibition hall)                         |
| 6 HADO ARENA<br>(Timed play facility)                             |   |

# B3F

Oshiage Station Connecting Floor

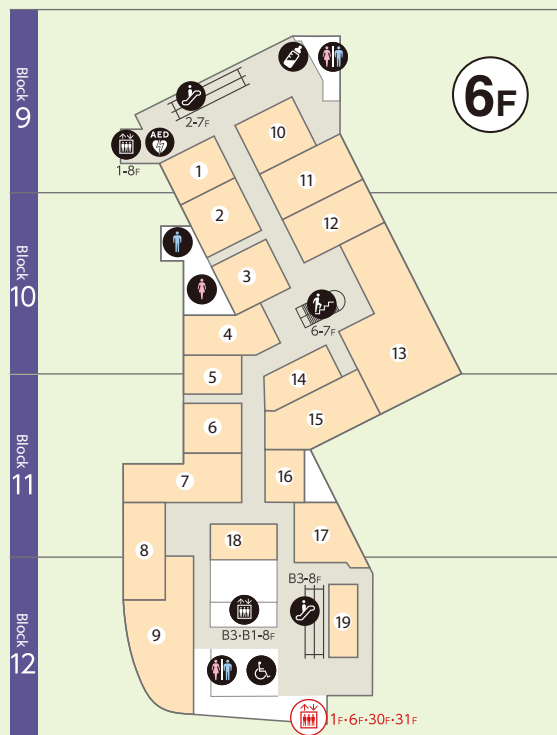


- Legend**
- Goods & Fashion
  - Food & Sweets
  - Restaurants & Cafe
  - Service
  - Exhibitions, Museums & Amusement
- Information, Escalators, Smoking Room, Restrooms, Postbox, Vending Machines, Multi-Purpose Restroom, Coin Lockers, Prayer Room, Nursing Room, Stairs, Foreign Currency Exchange Machine, Elevators, Automated External Defibrillator

# 6F - 7F

Restaurants  
Solamachi Dining

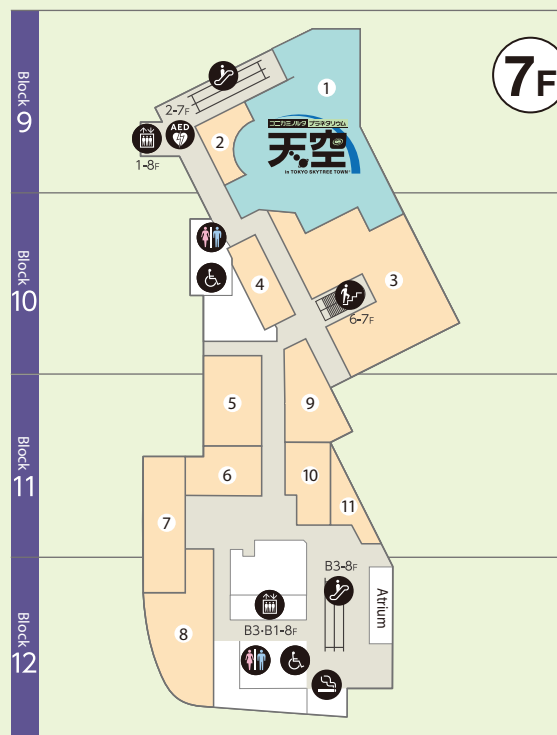
7F KONICA MINOLTA PLANETARIUM  
TENKU



Solamachi Dining  
SKYTREE VIEW  
Exclusive Elevator

## East Yard

- |   |  |
|---|--|
| 1 SAIKABO<br>(Korean cuisine)                                       | 10 miguelyuani<br>(Spanish cuisine)                              |
| 2 saboten<br>(Pork cutlet)  | 11 STARBUCKS®<br>(Cafe)  |
| 3 Indian Restaurant AMARA<br>(Indian cuisine)                       | 12 obon de gohan<br>(Japanese cuisine / Set meal)                |
| 4 GINZA TENRYU<br>(Chinese cuisine)                                 | 13 THE PLATINUM<br>(Buffet)                                      |
| 5 SyusaiSoba Syodai<br>(Soba noodles/Udon noodles)                  | 14 HITSUMABUSHI NAGOYA BINCHOU<br>(Eel over rice / Hitsumabushi) |
| 6 Mitchan Sohonten<br>(Okonomiyaki)                                 | 15 gyutansumiyaki rikyū<br>(Beef tongue dish)                    |
| 7 Meat speciality store Sugimoto Honten since 1900<br>(Meat dishes) | 16 EBISOBA ICHIGEN<br>(Ramen)                                    |
| 8 OKINAWA Dining Hateruma<br>(Okinawan cuisine)                     | 17 pyonpyonsya te-su<br>(Morioka cold noodless)                  |
| 9 kaiten sushi toriton<br>(Conveyor belt sushi)                     | 18 Rokurinsha Tokyo<br>(Dipping noodles and ramen)               |
|   | 19 GION TSUJIRI<br>(Japanese cafe)                               |



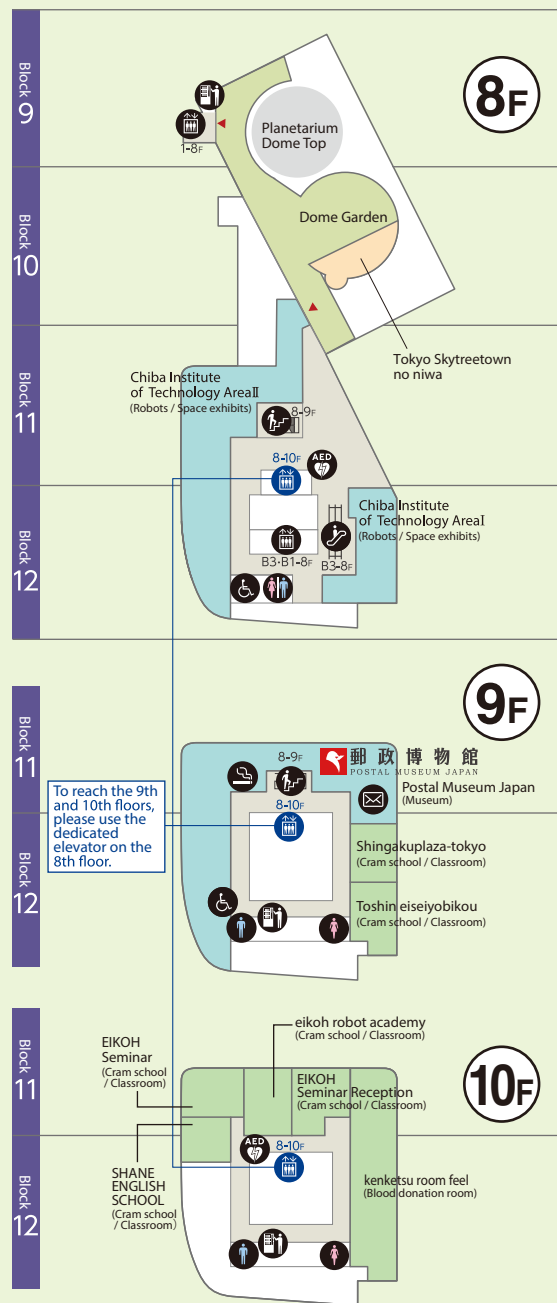
## East Yard

- |  |   |
|--|---|
| 1 KONICA MINOLTA PLANETARIUM TENKU in TOKYO SKYTREE TOWN®<br>(Planetarium) | 7 PIZZERIA MAR-DE NAPOLI<br>(pizza / Italian cuisine) |
| 2 SOL'S COFFEE<br>(Cafe)   | 8 DIN TAI FUNG<br>(Taiwanese cuisine)                 |
| 3 World Beer Museum<br>(Bar / Japanese pub)                                | 9 Sushizanmai<br>(Sushi)                              |
| 4 Tsukishima Meibutsu Monja DARUMA<br>(Monja)                              | 10 Unagi Komagata Maekawa<br>(Eel over rice)          |
| 5 Ginza Grill Cardinal<br>(Western cuisine)                                | 11 tamahide itino<br>(Chicken dish / Oyakodon)        |
| 6 kushiage kushitei<br>(Deep-fried skewers)                                |   |

# 8F - 10F

Life & Culture

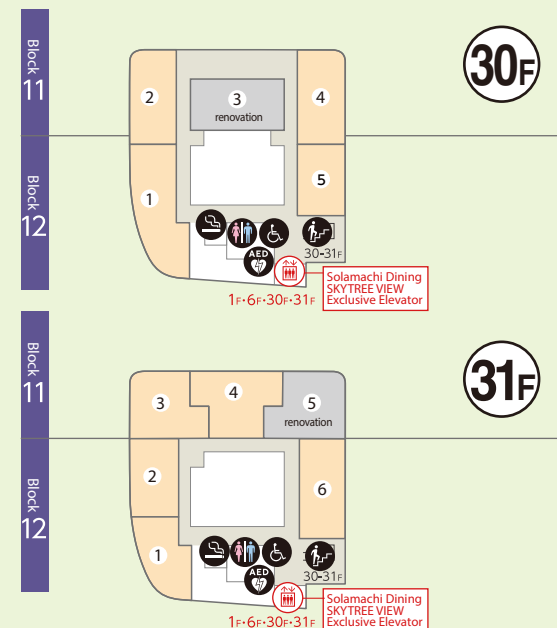
8F Dome Garden



To reach the 9th and 10th floors, please use the dedicated elevator on the 8th floor.

# 30F - 31F

Restaurants  
Solamachi Dining  
SKYTREE VIEW



## East Yard

- |  |     |  |     |
|--|-----|--|-----|
| 1 Yakniku JOJOEN<br>(Yakiniku)           | 30F | 1 arizuki<br>(Motsunabe / Japanese hotpot)       | 31F |
| 2 Brasserie Aux Amis<br>(French cuisine) |     | 2 matenrou<br>(Teppanyaki)                       |     |
| 3 renovation                             |     | 3 KUNIMI<br>(Japanese / Kaiseki cuisine)         |     |
| 4 Issare shu cielo<br>(Italian cuisine)  |     | 4 Tenku Lounge TOP of TREE<br>(Bar / Restaurant) |     |
| 5 uorikizushi<br>(Sushi)                 |     | 5 renovation                                     |     |
|  |     | 6 Series the Sky<br>(Chinese cuisine)            |     |